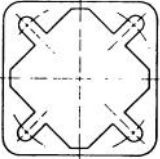


Poles and Bases

Square Base



See #5501 template



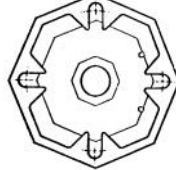
Threaded square base available in galv cast iron (primed, painted, unpainted) or aluminum (natural finish or painted). Use 4 1/2" threaded poles below.
 15 1/2"H x 13 3/4" x 13 3/4"
 Bolt Circle: 11" - 14 1/2"

- #671 — Al, natural, al door
- #6800 — Al, natural, plastic door
- #7344 — Al, natural, plastic door, ASHTO
- #7332 — Al, nat, Long neck, plas dr, ASHTO
- #2168 — Iron, painted, primed, or unpainted

Octagonal Base



See #5501 template



Threaded octagonal base available in galv cast iron (primed, painted, unpainted) or aluminum (natural finish or painted). Use 4 1/2" threaded poles below.
 14 1/4"H x 17"dia
 Bolt Circle: 11" - 14 1/2"

- #1048 — Alum, natural
- #1097 — Iron, painted, primed, or unpainted
- #5501=Anchor bolt template, 12.75" bolt dia

Spun Aluminum/Galv Steel Poles

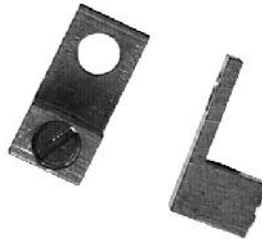
4 1/2" poles threaded one end

L	Alum	Sch	Galv
10'	6053	40	5763
12'	6054	40	6733
14'	7349	40	
15'			6734
16'	6055	40	
17'	7537	80	6735
18'	7334	40	
20'	6056	40	
21'			6736
24'	2488	80	

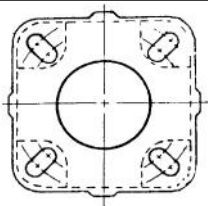


Grounding Lugs

#2920 Alum, Solderless
 #6-#14 AWG (mount w/6115 screw + #5322 lockwasher

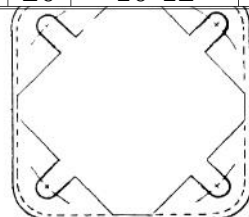
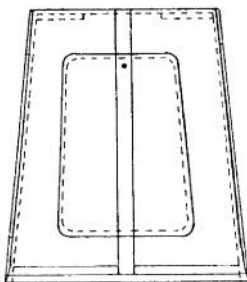


#6967 Bronze, Threaded
 1/2"-13 stud for #1 AWG stranded to #10 AWG solid wire



Transformer Bases (AASHTO)

Part #	H (in)	Top Bolt Circle	Bott Bolt Cir
775	17	10.5-13.5	13-15
1756	17	13-15	15-17.25
1754	20	11-13	10.5-13
1755	20	11-13	13-15
1753	20	10-12	10-12



Other sizes available

2-Piece Plastic Base

Dimensions: 22"H x 20"dia.
 Clamps to pole with 4 bolts
 Colored Gray to match natural finish
 4.5" aluminum poles anchored in concrete.
 No anchor bolts required.
 #5248

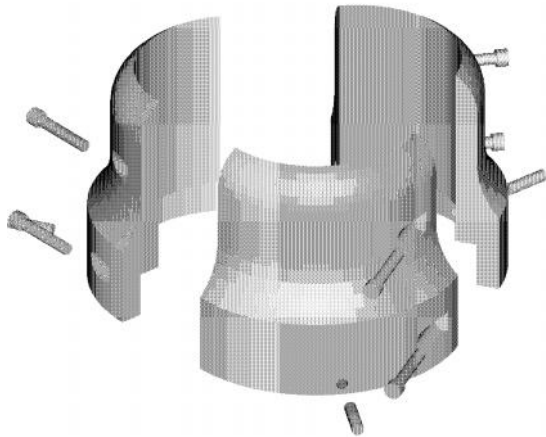


Poles and Bases

Aluminum Pole Collar

For pedestal poles with heavy wind loads and other high stress applications.

- > **Use with Square Base on previous page.**
- > **Retrofits to existing poles and bases**
- > **Firmly integrates the pole with the base at the threaded joint**
- > **Roll pins keep the pole from turning, eliminating the need for welding.**
- > **#7794 for CPI, Akron**
- > **#6700 for Permocast, Pelco**



Anchor Bolts

3/4"x18"x3 1/2"

Include flat round washer & hex nut.

- #315 — Black steel
- #4208 — Galvanized

Larger sizes available for poles over 10' or mast arms.



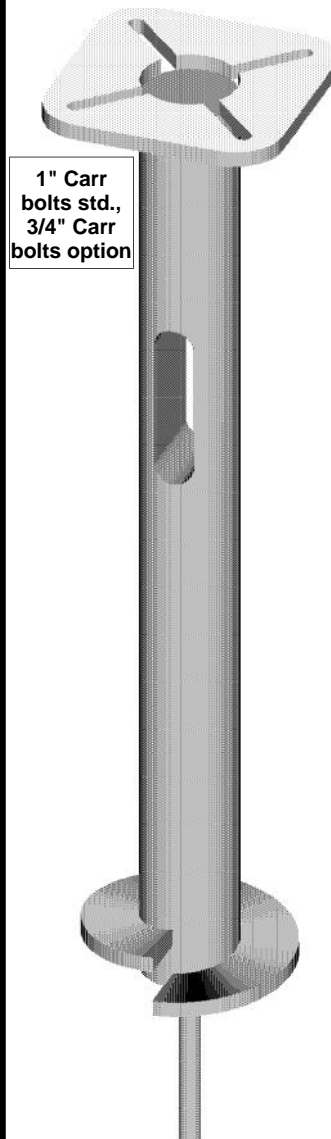
Power Installed Foundation Anchor Assembly

Reusable helix screw foundation for pole bases. (Special sizes also available)

- > **Steel, hot dip galv, 5' long, w/1" Gr5 Carriage bolts**

*=Sched 20 **=Sched 40

Model#	Platform	Bolt Circl	Shaft Dia
#6731*	12"x12"	9-14"	6"
#6768*	16"x16"	11-17"	8"
#7192**	16"x16"	11-17"	8"



Pole Caps

Cast alum Dome

#1005
4.5"



Acorn

#5811
4.5"
#5932
3.5"



Carriage Bolts

1"x4" GR5 HD Galv
w/2.5x.25Wsh,Lkwsh,
Nut



Tools:

- #7329 Univ Drive Tool
- Kelly Adapters:
- #4112 — 2 1/2"
- #7330 — 2 5/8"