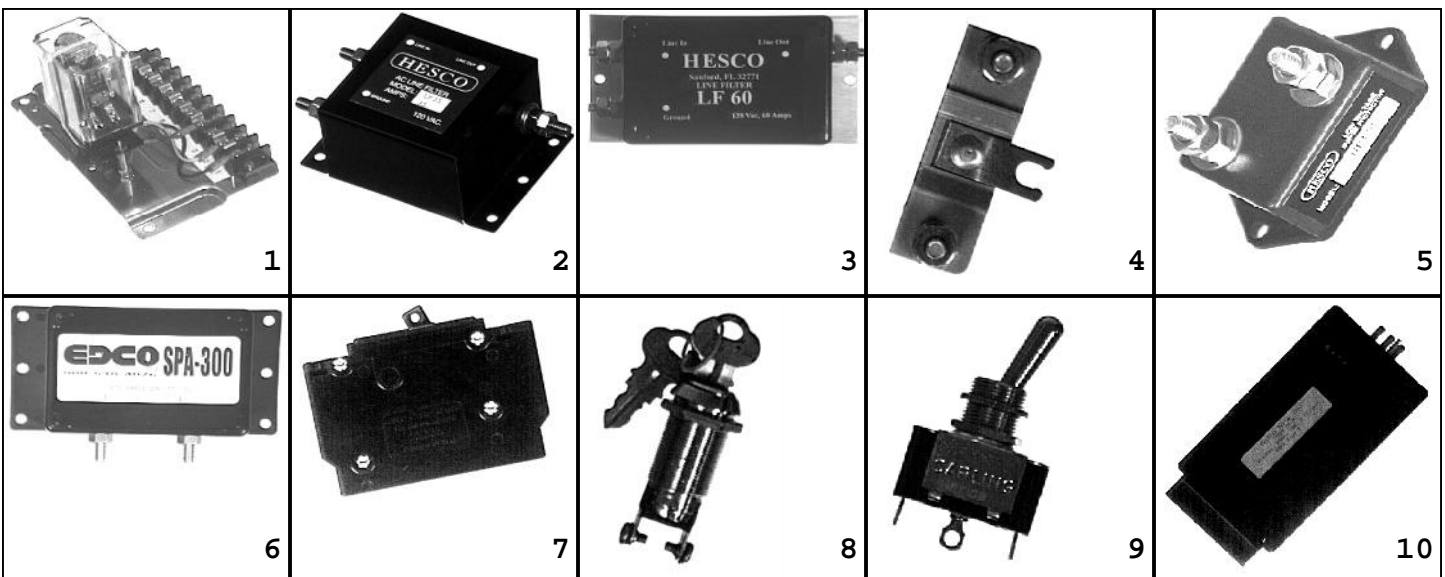


Traffic Parts,

Component parts for
FLASHER CABS

Pic# P/N Description:

	5186	TIMER, 1CH, 24H/7DAY, NEMA I	120VAC, CAPACITIVE BACKUP
1	6176	LUMINAIRE RELAY PANEL	W/RELAY
	7253	FLASHER PANEL, TXDOT	W/FLASHER
2	1683	FILTER, LINE, 30A, 120V, 60HZ	STANDARD DUTY
3	352	FILTER, LINE, 60A, 130V, 60HZ	HEAVY DUTY
4	1199	SURGE PROTECTOR	STANDARD DUTY
5	2885	SURGE PROTECTOR	HEAVY DUTY
6	1045	SURGE PROTECTOR, AC SERVIC	LINE/NEUT, EXTRA HVY DUTY
7	1136	CIRCUIT BREAKER, 1POLE, 15A	PANEL MOUNT
7	2217	CIRCUIT BREAKER, 1POLE, 20A	PANEL MOUNT
7	2413	CIRCUIT BREAKER, 1POLE, 30A	PANEL MOUNT
8	2540	KEY SWITCH, W/2 KEYS	MOMENTARY, NO
8	2745	KEY SWITCH, W/2 KEYS	MOMENTARY, NC
9	1485	SWITCH, AUTO-HAND	SPDT, 2POS, 15A
10	714	FLASHER, NEMA/170, 15A, 2CKT	DISCRETE
10	7165	FLASHER, NEMA, 15A, 2CKT	DISCRETE, 204-15
10	490	FLASHER, NEMA, 15A, 2CKT	REPLACEABLE CUBES
	4446	FLASHER, 170/CALTRANS	15A, DISCRETE
10	5551	FLASHER, 15A, 2CKT	DIMMABLE, 6PIN, PLUG-IN



800.345.6329

129

www.trafficparts.com

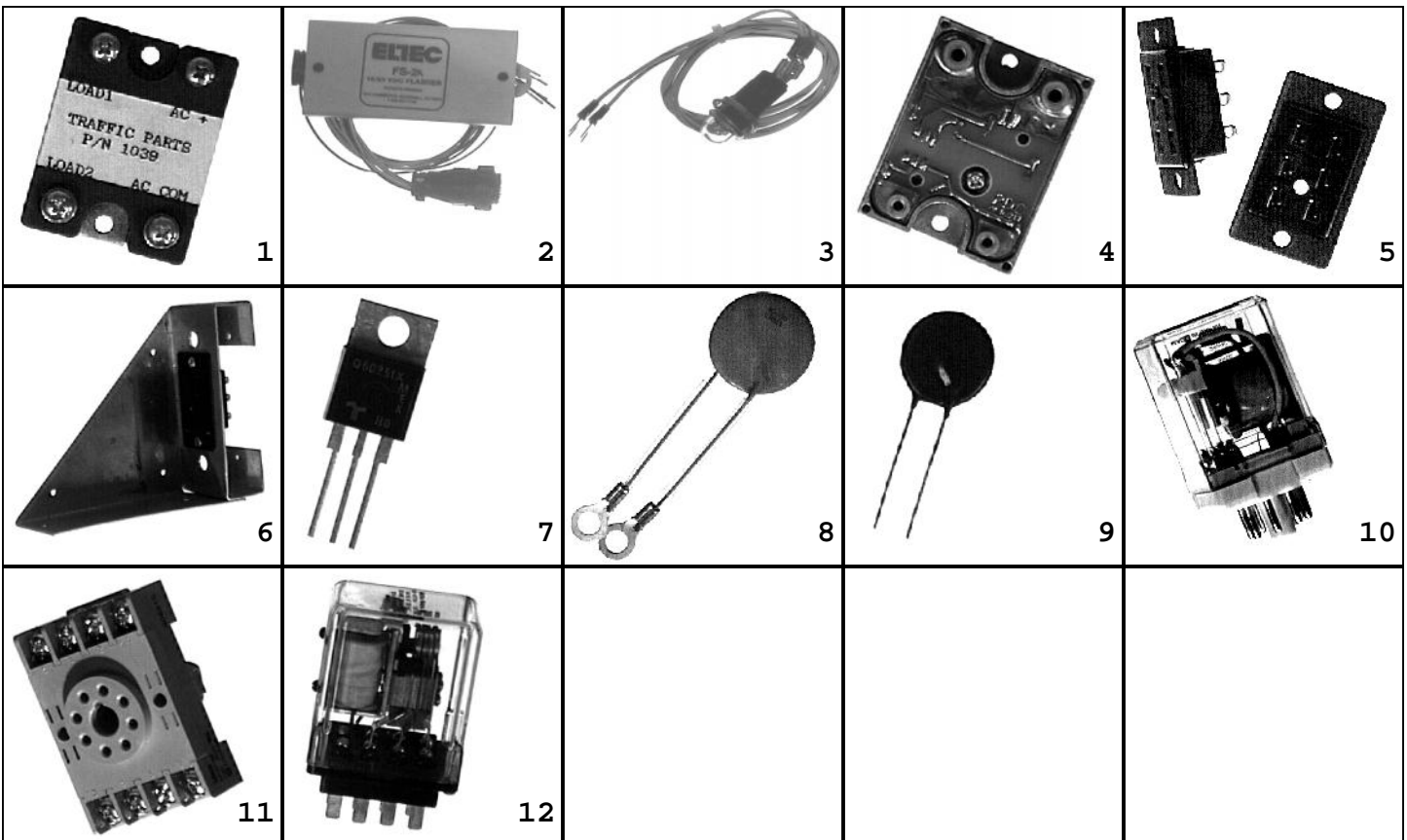
©Traffic Parts, Inc.

Traffic Parts,

Component parts for
FLASHER CABS

Pic# P/N Description:

1	1039	FLASHER, SS, 2CKT, 120VAC	CUBE
1	6112	FLASHER, SS, 2CKT, 12VDC	CUBE
2	7281	FLASHER, SOLAR, FS-2	12/24VDC
	5552	PHOTOCELL, 1000VA, 120VAC	3/8-18NPS STEM, WIRE LEADS
3	7317	PHOTOCELL, FOR SOLAR PNL	W/HOLDER AND HARNESS
	2933	CUBE FOR FLASHER, 40A	3VDC PULL-IN
	2934	CUBE FOR FLASHER, 25A	3VDC PULL-IN
4	220	CUBE, LDSW/FLASHER, 25A	12VDC, PULL-IN
5	210	SOCKET, 6, PIN, FEMALE	NEMA FLASHER, FLUSH MOUNT
6	451	BRKT ASSY, NEMA FLASHER	W/SOCKET, UNIVERSAL MOUNT
	6095	GROMMET, EPDM	5/8"X7/8"X1/16" GROOVE
	7064	GROMMET, EPDM	.7"ID, 1.0"OD, .06 GROOVE
7	624	TRIAC, 25A, 500V, ISOLATED	NEMA FLASHER
8	6013	MOV, CAP FLASHER	
9	2330	VARISTOR, V150LA20A	W/ 1.5" LEADS
10	358	RELAY, 2PDT, 8 PIN, OCTAL	10A, 120VAC, SINGLE CONTACT
11	890	BASE, RELAY, 8 PIN, ROUND	SURFACE/DIN MOUNT, WIDE
12	84	RELAY, NEMA FLASHER XFER	20A TUNGST, NEMA TS2-1992



800.345.6329

130

www.trafficparts.com

©Traffic Parts, Inc.

Traffic Parts,

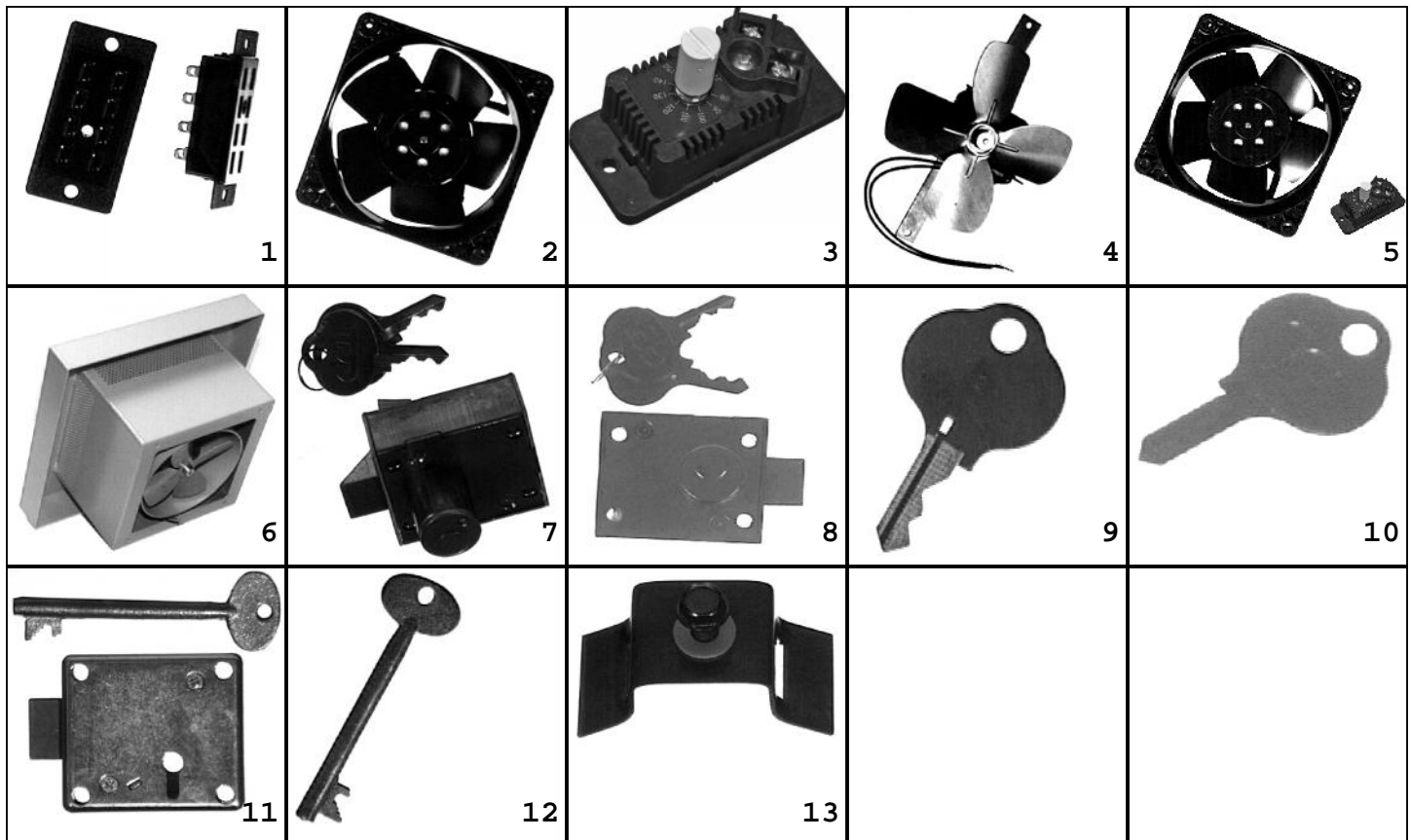
Component parts for
FLASHER CABS

Pic# P/N Description:

1 2176 SOCKET, NEMA, FLASH RELAY 8 PIN, PANEL MOUNT

Component parts for CABINETS

2	894	FAN, BOX, 105CFM, 120VAC, BB	4 11/16" X 4 11/16" X 1 1/2"
3	948	THERMOSTAT, 70-160F	FOR FAN ASSEMBLY
4	949	FAN MOTOR ASSY, 6" VENT	W/O COVER, CH (TCF-2)
5	2711	FAN + THERMOSTAT ASSEMBLY	
6	4135	FAN MOTOR ASSY, 4" VENT	W/SHEET AL COVER P4
6	2105	FAN MOTOR ASSY, 6" VENT	W/SHEET AL COVER P4
7	397	LOCK, SLAM TYPE, W/#2 KEY	W/2 KEYS, RIGHT HAND
8	7060	LOCK, DEAD BOLT, W/#2 KEY	W/2 KEYS, RIGHT HAND
9	1566	KEY, #2, CORBIN STYLE	CONTROLLER CABINET LOCK
10	7563	KEY, BLANK, CORBIN STYLE	FOR SLAM/DEADBOLT LOCKS
11	1565	LOCK, SLAM TYPE, W/LONG KEY	POLICE, RIGHT HAND
12	369	KEY, LONG, POLICE	CORBIN STYLE LOCK
13	2441	BRACKET, SIGN, BANDING	W/SS BOLT+WASHER (50/BOX)



800.345.6329

131

www.trafficparts.com

©Traffic Parts, Inc.